



May 10 & 26, 2022

# Parish and City of Lafayette Redistricting 2020

# Introduction

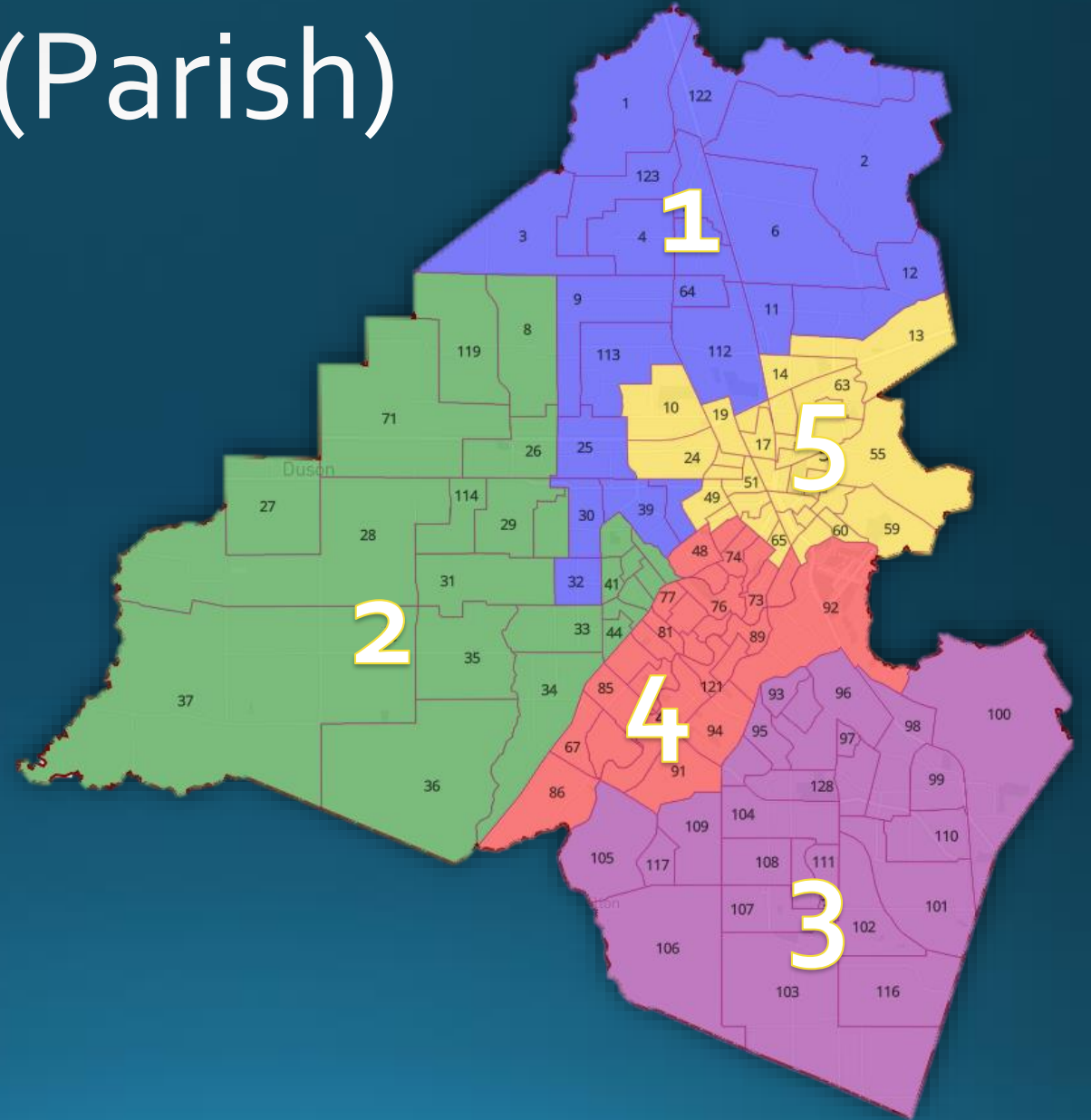
- Why – Total Population increased by 20,175 (9.1%) but not evenly
- Evaluate the existing population changes
- Discuss changes with members
- Create alternatives
- Provide web maps for study and review
- Present plans for public input
- Plan adoption
- Package files, maps and tables to submit to Secretary of State

# Redistricting Principles

- Equal protection and representation (one person = one vote)
  - $\pm 5\%$  for each district or under 10% overall deviation
  - Equal Protection Clause (14<sup>th</sup> Constitutional Amendment, 1868)
- Non-discriminatory (to minority communities)
  - Voting Rights Act (Section 2, 1965)
- Protection of incumbents
- Compactness
- Contiguous
- Similar Communities (or communities of interest)

# Existing Districts (Parish)

- The existing Parish Council district configuration has a population variance of over 49% which is unacceptable
- District 5 has a Minority Majority population (64%) which should try to be maintained in all redistricting alternatives and plans
- District 3 has a population in excess of 30% of the ideal size



# Existing Districts (Parish) – 2020 Population

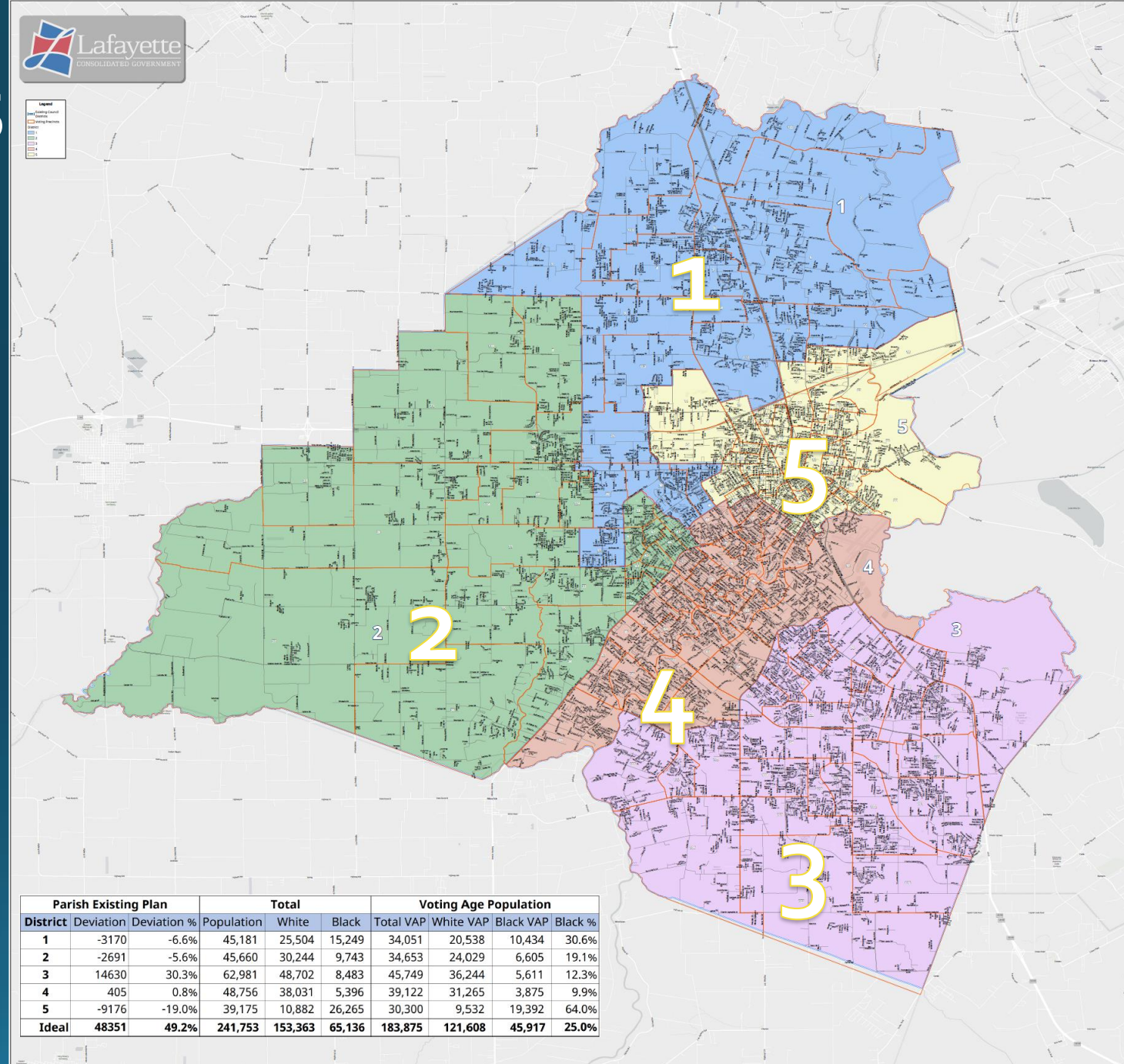
Parish Existing Plan			Total			Voting Age Population			
District	Deviation	Deviation %	Population	White	Black	Total VAP	White VAP	Black VAP	Black %
1	-3170	-6.6%	45,181	25,504	15,249	34,051	20,538	10,434	30.6%
2	-2691	-5.6%	45,660	30,244	9,743	34,653	24,029	6,605	19.1%
3	14630	30.3%	62,981	48,702	8,483	45,749	36,244	5,611	12.3%
4	405	0.8%	48,756	38,031	5,396	39,122	31,265	3,875	9.9%
5	-9176	-19.0%	39,175	10,882	26,265	30,300	9,532	19,392	64.0%
<b>Ideal</b>	<b>48351</b>	<b>49.2%</b>	<b>241,753</b>	<b>153,363</b>	<b>65,136</b>	<b>183,875</b>	<b>121,608</b>	<b>45,917</b>	<b>25.0%</b>

## Notes:

The 49.24% population deviation is greater than the 10% threshold tolerated by the courts.  
Four districts lean Republican, one leans Democratic, and none fall in the 45–55% competitive range.  
There is one majority-minority district.



# Existing Districts (Parish)



Parish Existing Plan			Total			Voting Age Population			
District	Deviation	Deviation %	Population	White	Black	Total VAP	White VAP	Black VAP	Black %
1	-3170	-6.6%	45,181	25,504	15,249	34,051	20,538	10,434	30.6%
2	-2691	-5.6%	45,660	30,244	9,743	34,653	24,029	6,605	19.1%
3	14630	30.3%	62,981	48,702	8,483	45,749	36,244	5,611	12.3%
4	405	0.8%	48,756	38,031	5,396	39,122	31,265	3,875	9.9%
5	-9176	-19.0%	39,175	10,882	26,265	30,300	9,532	19,392	64.0%
Ideal	48351	49.2%	241,753	153,363	65,136	183,875	121,608	45,917	25.0%



Lafayette Parish  
Existing Districts

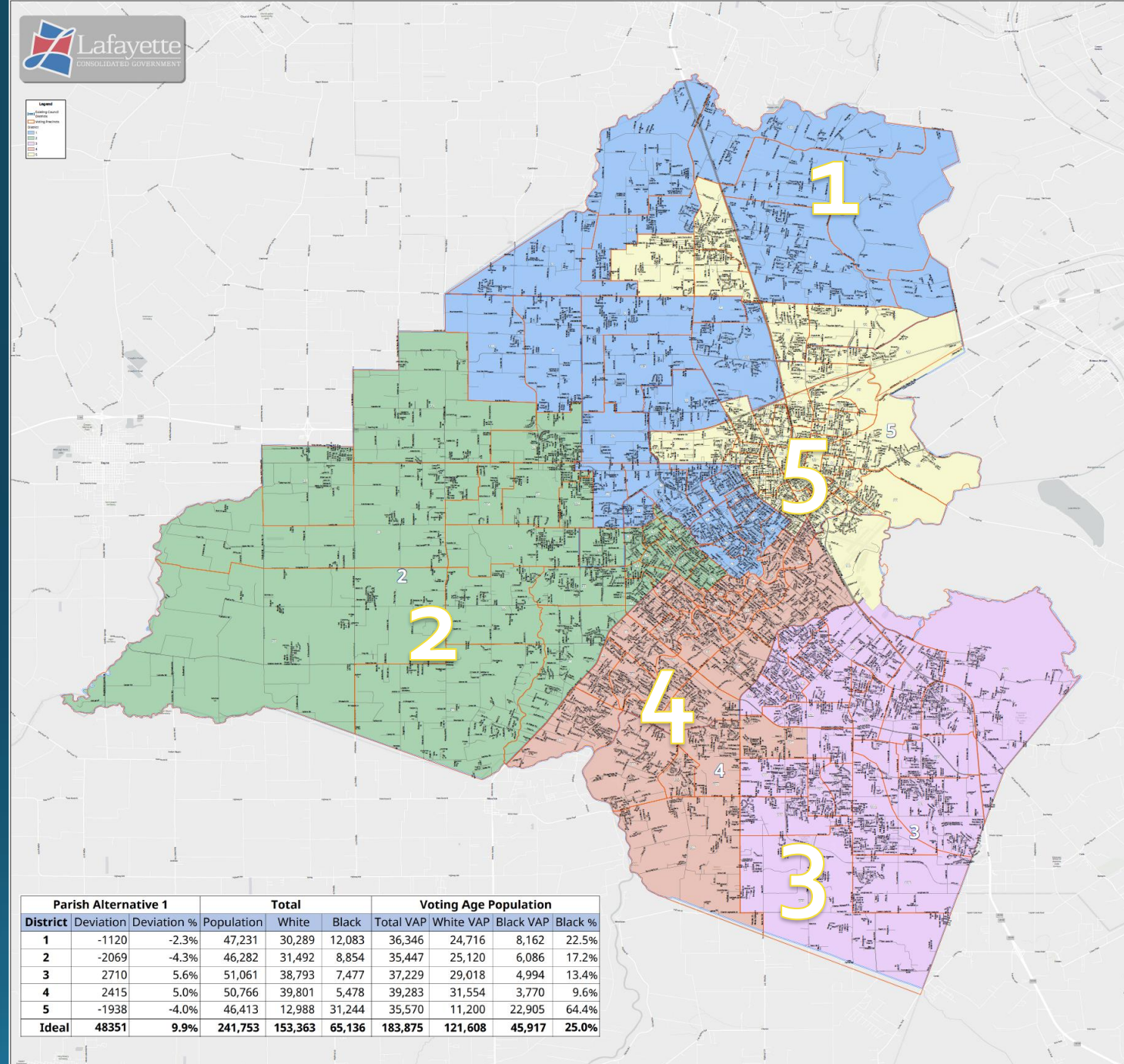


# Alternative 1 (Parish)

Parish Alternative 1			Total			Voting Age Population			
District	Deviation	Deviation %	Population	White	Black	Total VAP	White VAP	Black VAP	Black %
1	-1120	-2.3%	47,231	30,289	12,083	36,346	24,716	8,162	22.5%
2	-2069	-4.3%	46,282	31,492	8,854	35,447	25,120	6,086	17.2%
3	2710	5.6%	51,061	38,793	7,477	37,229	29,018	4,994	13.4%
4	2415	5.0%	50,766	39,801	5,478	39,283	31,554	3,770	9.6%
5	-1938	-4.0%	46,413	12,988	31,244	35,570	11,200	22,905	64.4%
Ideal	48351	9.9%	241,753	153,363	65,136	183,875	121,608	45,917	25.0%



# Alternative 1 (Parish)

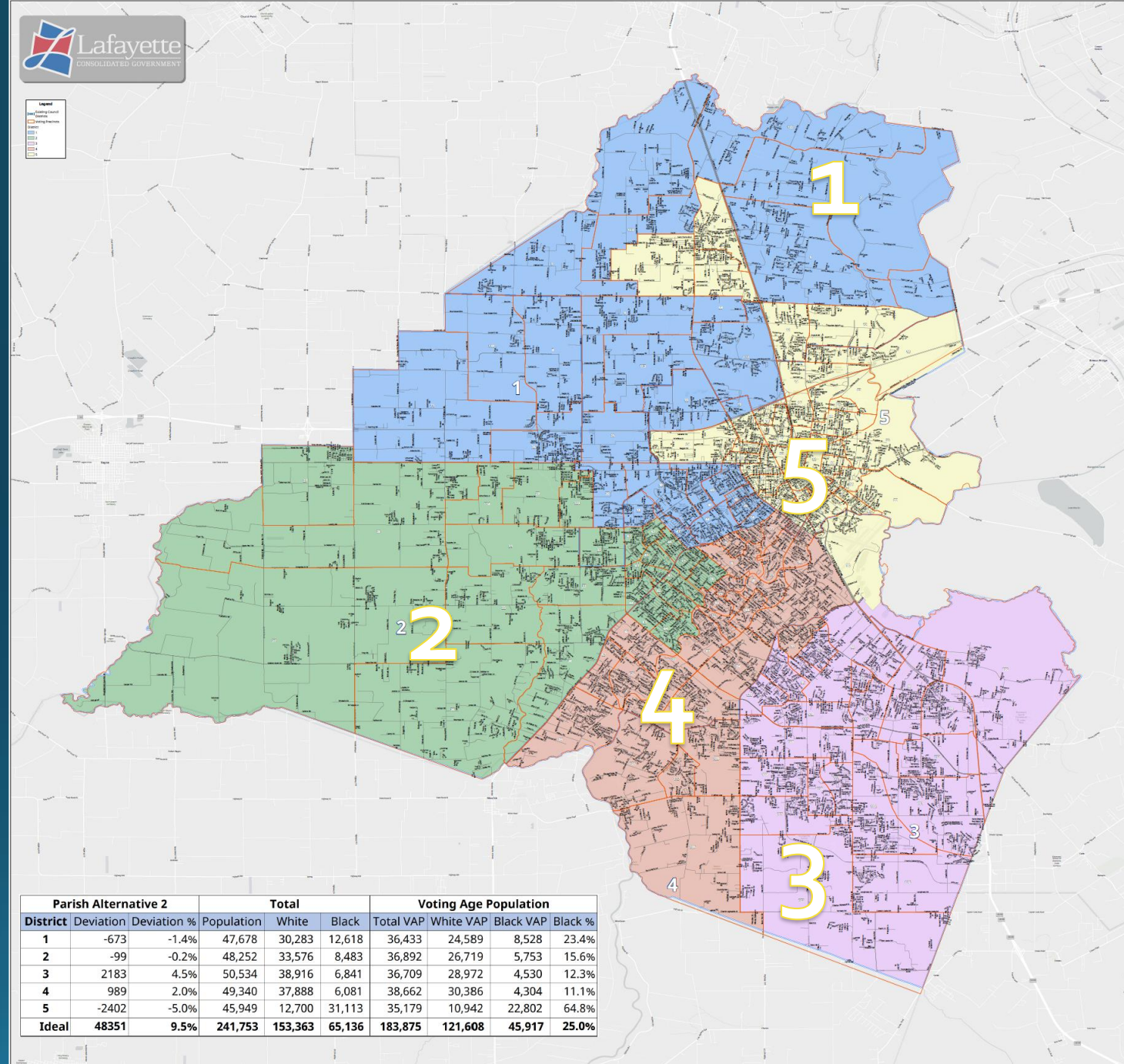




# Alternative 2 (Parish)

Parish Alternative 2			Total			Voting Age Population			
District	Deviation	Deviation %	Population	White	Black	Total VAP	White VAP	Black VAP	Black %
1	-673	-1.4%	47,678	30,283	12,618	36,433	24,589	8,528	23.4%
2	-99	-0.2%	48,252	33,576	8,483	36,892	26,719	5,753	15.6%
3	2183	4.5%	50,534	38,916	6,841	36,709	28,972	4,530	12.3%
4	989	2.0%	49,340	37,888	6,081	38,662	30,386	4,304	11.1%
5	-2402	-5.0%	45,949	12,700	31,113	35,179	10,942	22,802	64.8%
Ideal	48351	9.5%	241,753	153,363	65,136	183,875	121,608	45,917	25.0%

# Alternative 2 (Parish)



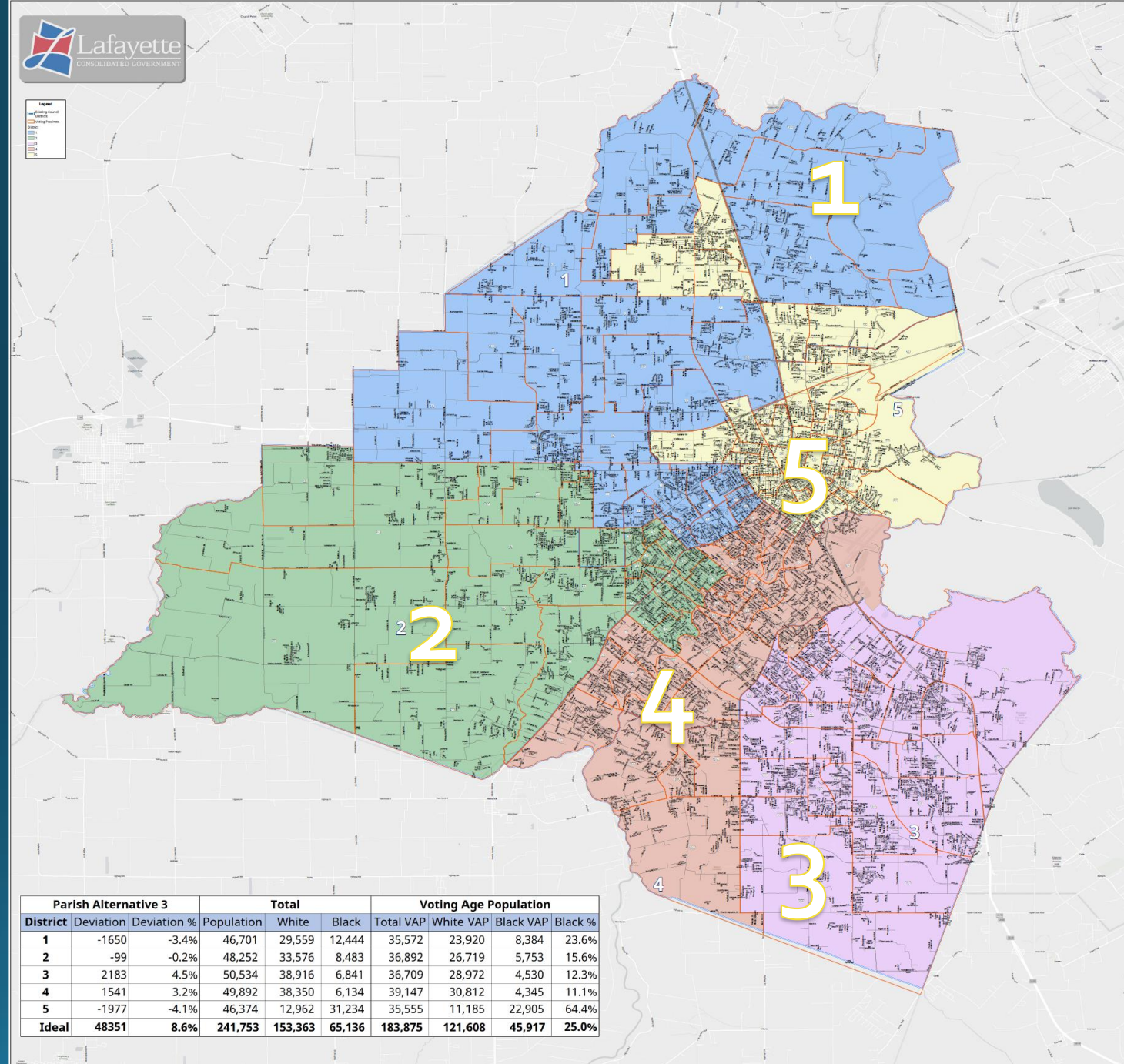
Parish Alternative 2			Total			Voting Age Population			
District	Deviation	Deviation %	Population	White	Black	Total VAP	White VAP	Black VAP	Black %
1	-673	-1.4%	47,678	30,283	12,618	36,433	24,589	8,528	23.4%
2	-99	-0.2%	48,252	33,576	8,483	36,892	26,719	5,753	15.6%
3	2183	4.5%	50,534	38,916	6,841	36,709	28,972	4,530	12.3%
4	989	2.0%	49,340	37,888	6,081	38,662	30,386	4,304	11.1%
5	-2402	-5.0%	45,949	12,700	31,113	35,179	10,942	22,802	64.8%
<b>Ideal</b>	<b>48351</b>	<b>9.5%</b>	<b>241,753</b>	<b>153,363</b>	<b>65,136</b>	<b>183,875</b>	<b>121,608</b>	<b>45,917</b>	<b>25.0%</b>

# Alternative 3 (Parish)

Parish Alternative 3			Total			Voting Age Population			
District	Deviation	Deviation %	Population	White	Black	Total VAP	White VAP	Black VAP	Black %
1	-1650	-3.4%	46,701	29,559	12,444	35,572	23,920	8,384	23.6%
2	-99	-0.2%	48,252	33,576	8,483	36,892	26,719	5,753	15.6%
3	2183	4.5%	50,534	38,916	6,841	36,709	28,972	4,530	12.3%
4	1541	3.2%	49,892	38,350	6,134	39,147	30,812	4,345	11.1%
5	-1977	-4.1%	46,374	12,962	31,234	35,555	11,185	22,905	64.4%
Ideal	48351	8.6%	241,753	153,363	65,136	183,875	121,608	45,917	25.0%



# Alternative 3 (Parish)



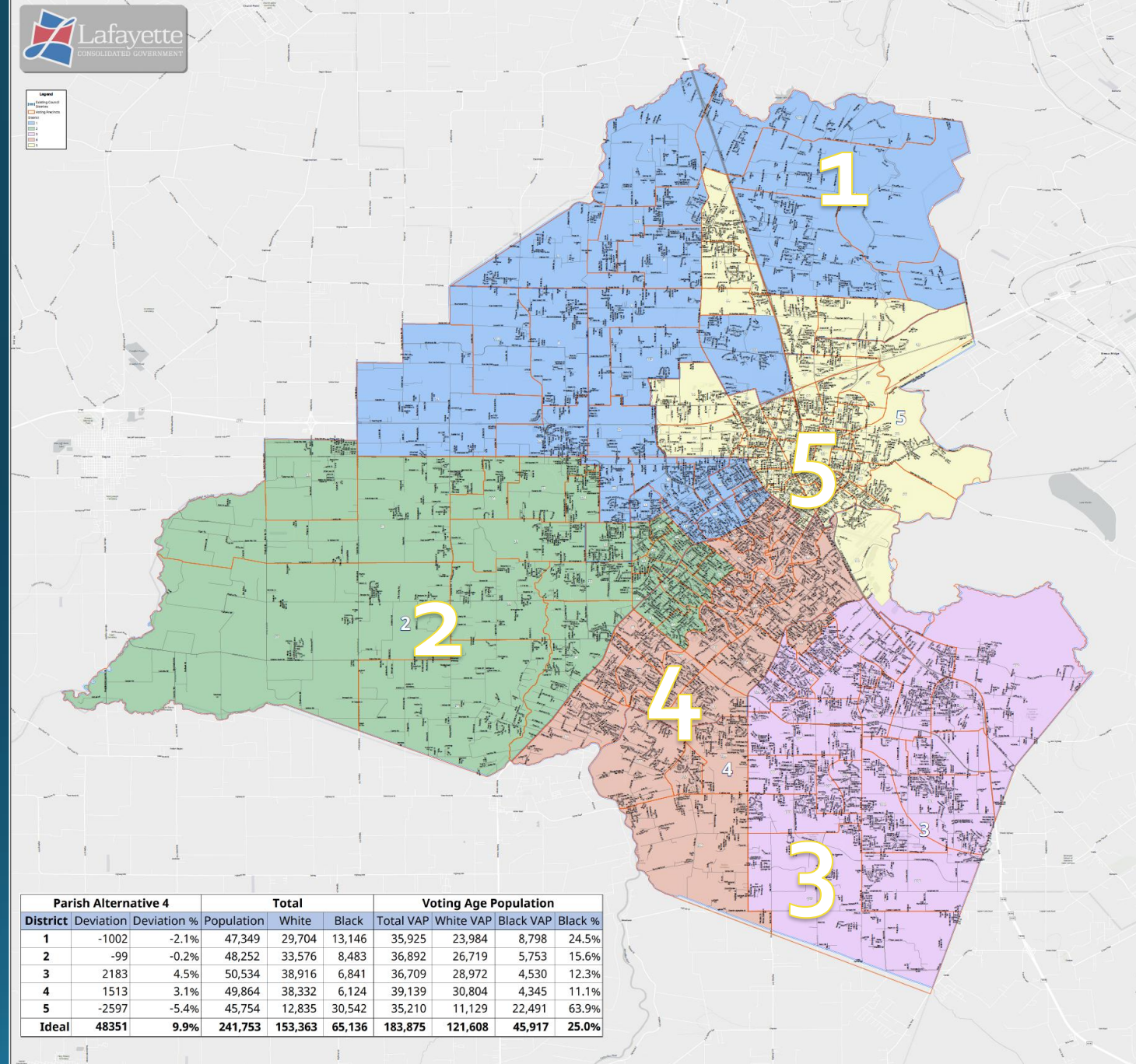
Parish Alternative 3			Total			Voting Age Population			
District	Deviation	Deviation %	Population	White	Black	Total VAP	White VAP	Black VAP	Black %
1	-1650	-3.4%	46,701	29,559	12,444	35,572	23,920	8,384	23.6%
2	-99	-0.2%	48,252	33,576	8,483	36,892	26,719	5,753	15.6%
3	2183	4.5%	50,534	38,916	6,841	36,709	28,972	4,530	12.3%
4	1541	3.2%	49,892	38,350	6,134	39,147	30,812	4,345	11.1%
5	-1977	-4.1%	46,374	12,962	31,234	35,555	11,185	22,905	64.4%
<b>Ideal</b>	<b>48351</b>	<b>8.6%</b>	<b>241,753</b>	<b>153,363</b>	<b>65,136</b>	<b>183,875</b>	<b>121,608</b>	<b>45,917</b>	<b>25.0%</b>

# Alternative 4 (Parish)

Parish Alternative 4			Total			Voting Age Population			
District	Deviation	Deviation %	Population	White	Black	Total VAP	White VAP	Black VAP	Black %
1	-1002	-2.1%	47,349	29,704	13,146	35,925	23,984	8,798	24.5%
2	-99	-0.2%	48,252	33,576	8,483	36,892	26,719	5,753	15.6%
3	2183	4.5%	50,534	38,916	6,841	36,709	28,972	4,530	12.3%
4	1513	3.1%	49,864	38,332	6,124	39,139	30,804	4,345	11.1%
5	-2597	-5.4%	45,754	12,835	30,542	35,210	11,129	22,491	63.9%
Ideal	48351	9.9%	241,753	153,363	65,136	183,875	121,608	45,917	25.0%



# Alternative 4 (Parish)



Parish Alternative 4			Total			Voting Age Population			
District	Deviation	Deviation %	Population	White	Black	Total VAP	White VAP	Black VAP	Black %
1	-1002	-2.1%	47,349	29,704	13,146	35,925	23,984	8,798	24.5%
2	-99	-0.2%	48,252	33,576	8,483	36,892	26,719	5,753	15.6%
3	2183	4.5%	50,534	38,916	6,841	36,709	28,972	4,530	12.3%
4	1513	3.1%	49,864	38,332	6,124	39,139	30,804	4,345	11.1%
5	-2597	-5.4%	45,754	12,835	30,542	35,210	11,129	22,491	63.9%
Ideal	48351	9.9%	241,753	153,363	65,136	183,875	121,608	45,917	25.0%



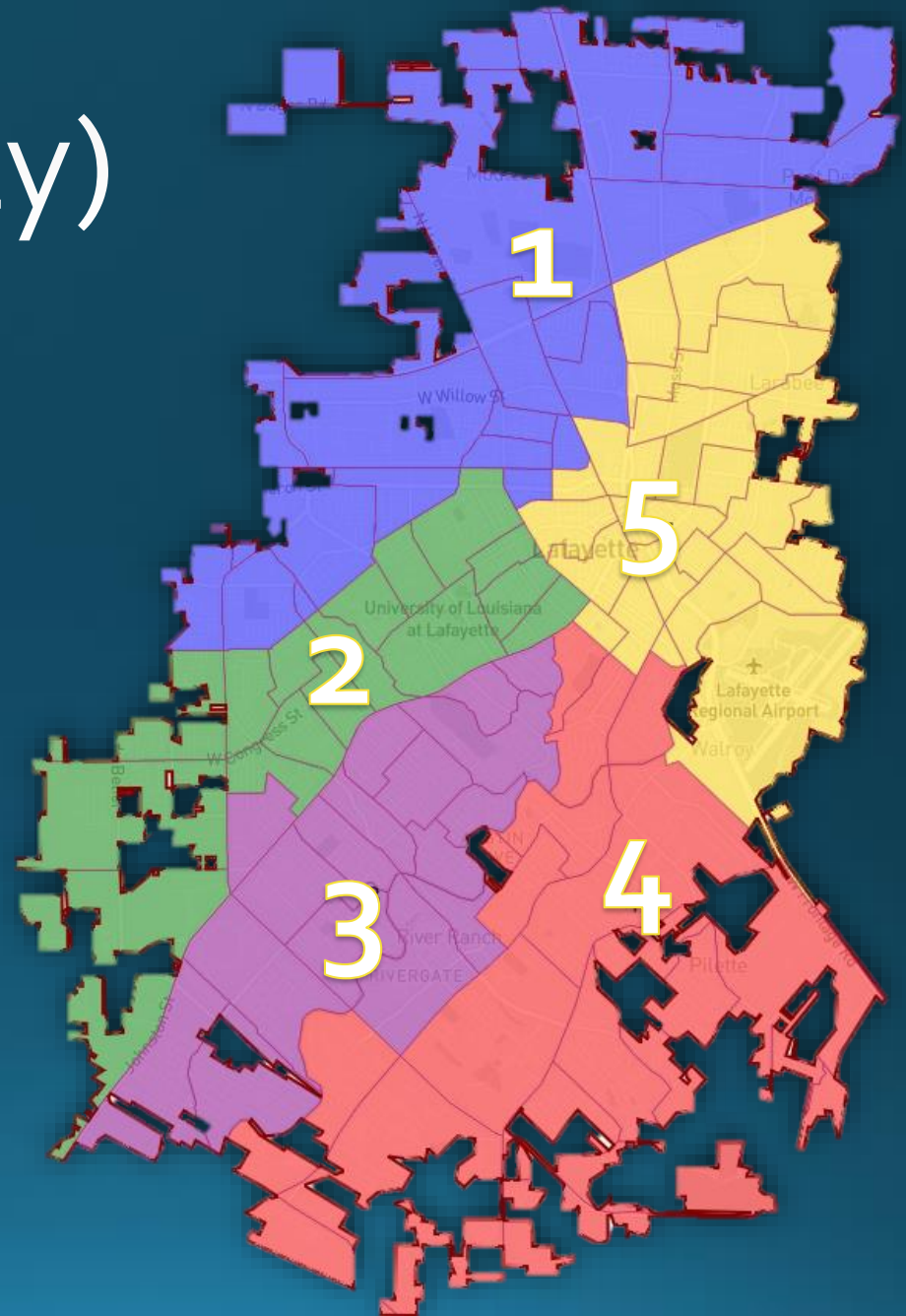
Lafayette Parish  
Alternative 4





# Existing Districts (City)

- The existing city district configuration has a population variance of nearly 29% which is unacceptable
- Districts 1 and 5 has a Minority Majority population (58.1% and 63.48) which should try to be maintained in all redistricting alternatives and plans
- District 4 has a population in excess of 16.3% of the ideal size



# Existing Districts (City) – 2020 Population

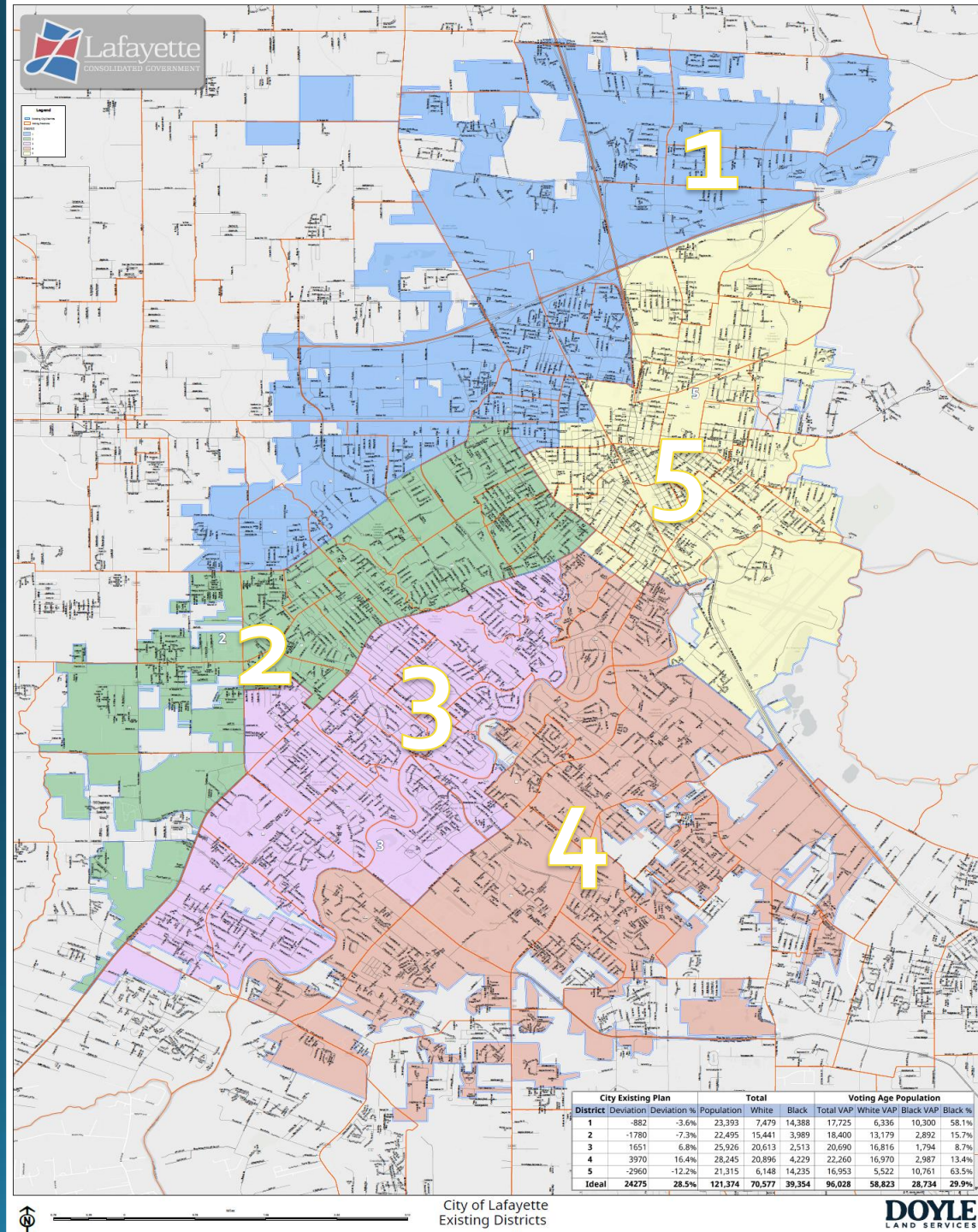
City Existing Plan			Total			Voting Age Population			
District	Deviation	Deviation %	Population	White	Black	Total VAP	White VAP	Black VAP	Black %
1	-882	-3.6%	23,393	7,479	14,388	17,725	6,336	10,300	58.1%
2	-1780	-7.3%	22,495	15,441	3,989	18,400	13,179	2,892	15.7%
3	1651	6.8%	25,926	20,613	2,513	20,690	16,816	1,794	8.7%
4	3970	16.4%	28,245	20,896	4,229	22,260	16,970	2,987	13.4%
5	-2960	-12.2%	21,315	6,148	14,235	16,953	5,522	10,761	63.5%
<b>Ideal</b>	<b>24275</b>	<b>28.5%</b>	<b>121,374</b>	<b>70,577</b>	<b>39,354</b>	<b>96,028</b>	<b>58,823</b>	<b>28,734</b>	<b>29.9%</b>

## Notes:

The 28.5% population deviation is greater than the 10% threshold tolerated by the courts.  
 Three districts lean Republican, two lean Democratic, and none fall in the 45–55% competitive range.  
 There are two majority-minority districts.



# Current Districts

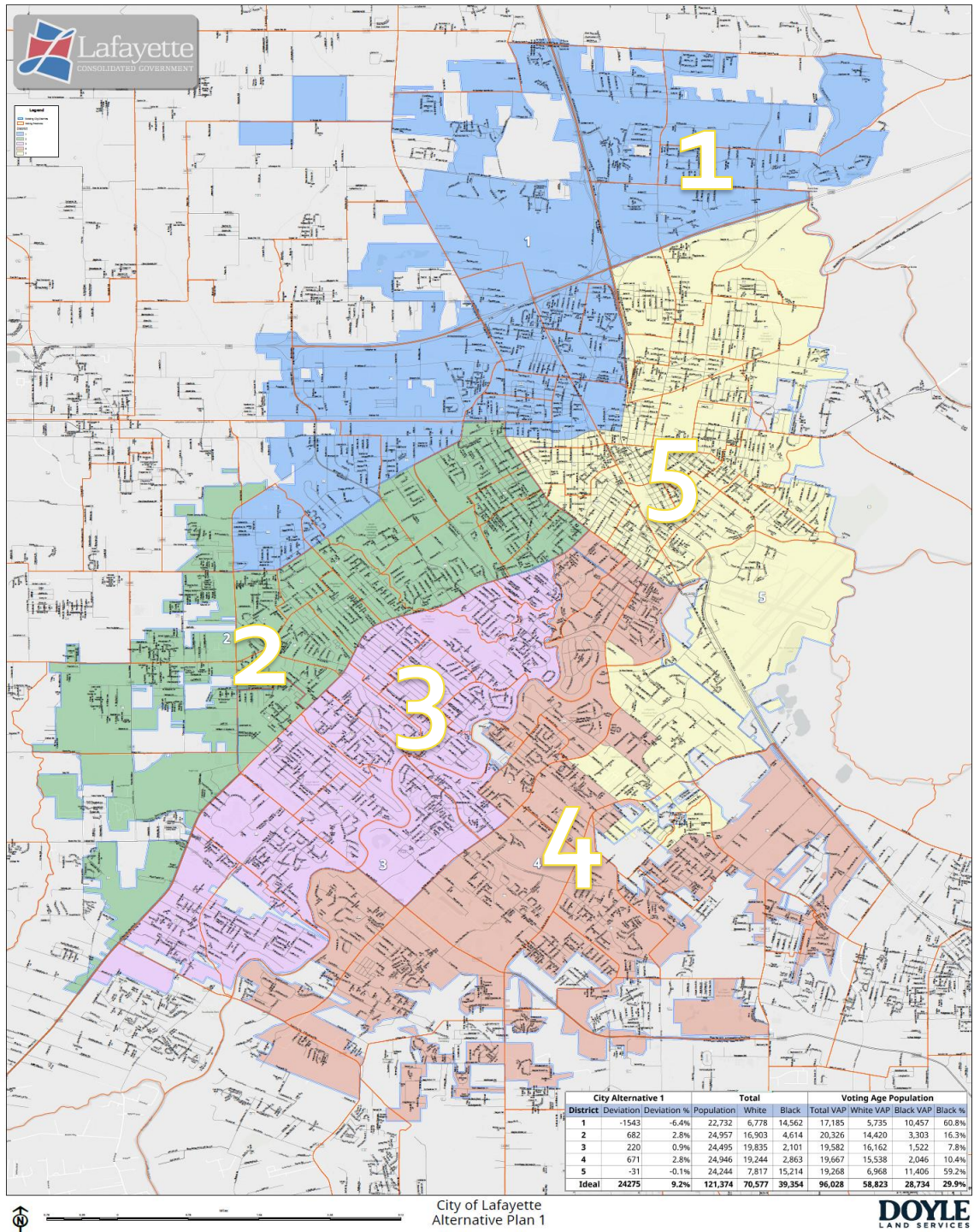




# Alternative 1 (City)

City Alternative 1			Total			Voting Age Population			
District	Deviation	Deviation %	Population	White	Black	Total VAP	White VAP	Black VAP	Black %
1	-1543	-6.4%	22,732	6,778	14,562	17,185	5,735	10,457	60.8%
2	682	2.8%	24,957	16,903	4,614	20,326	14,420	3,303	16.3%
3	220	0.9%	24,495	19,835	2,101	19,582	16,162	1,522	7.8%
4	671	2.8%	24,946	19,244	2,863	19,667	15,538	2,046	10.4%
5	-31	-0.1%	24,244	7,817	15,214	19,268	6,968	11,406	59.2%
Ideal	24275	9.2%	121,374	70,577	39,354	96,028	58,823	28,734	29.9%

# Alternative 1 (City)

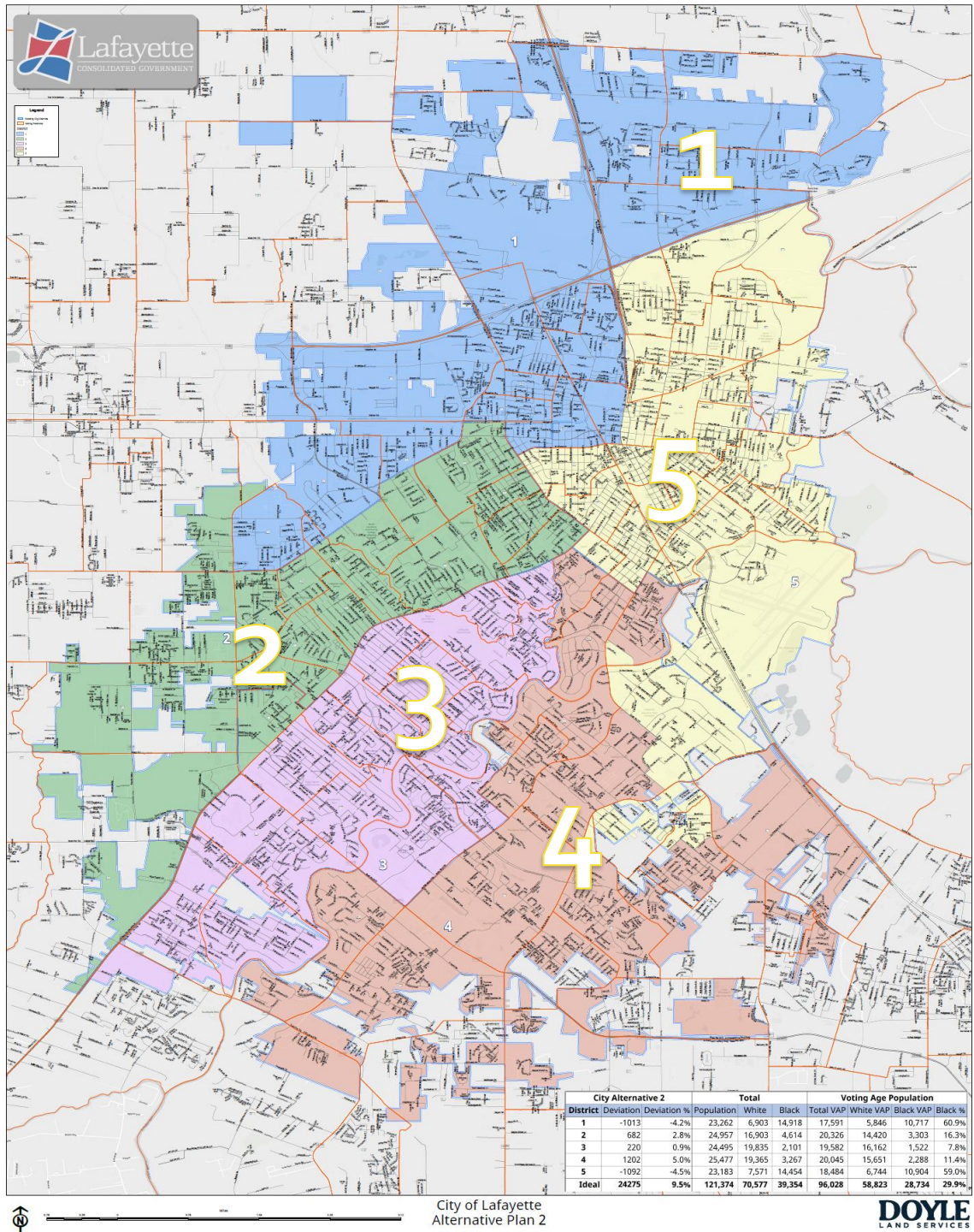


# Alternative 2 (City)

City Alternative 2			Total			Voting Age Population			
District	Deviation	Deviation %	Population	White	Black	Total VAP	White VAP	Black VAP	Black %
1	-1013	-4.2%	23,262	6,903	14,918	17,591	5,846	10,717	60.9%
2	682	2.8%	24,957	16,903	4,614	20,326	14,420	3,303	16.3%
3	220	0.9%	24,495	19,835	2,101	19,582	16,162	1,522	7.8%
4	1202	5.0%	25,477	19,365	3,267	20,045	15,651	2,288	11.4%
5	-1092	-4.5%	23,183	7,571	14,454	18,484	6,744	10,904	59.0%
Ideal	24275	9.5%	121,374	70,577	39,354	96,028	58,823	28,734	29.9%



# Alternative 2 (City)

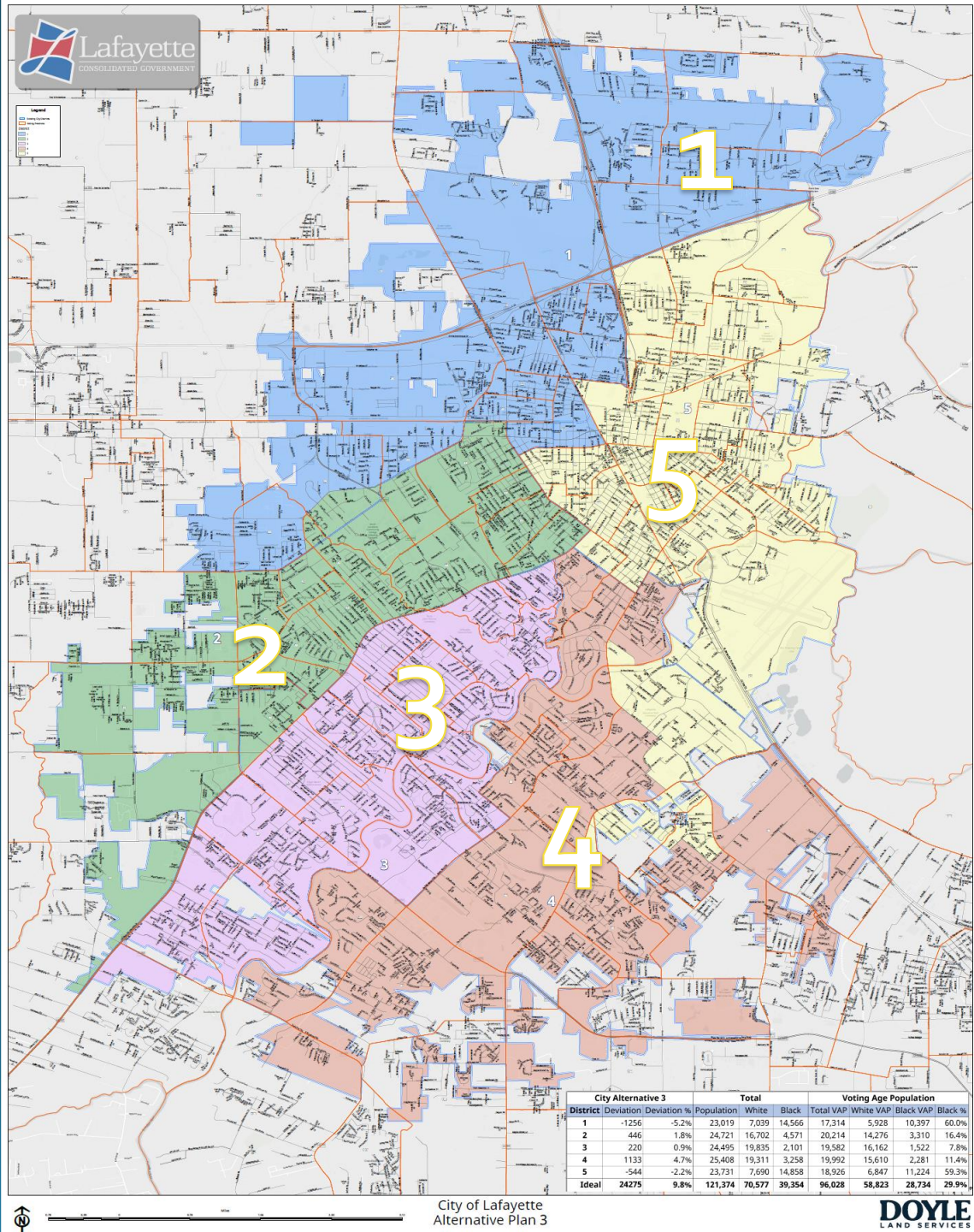


# Alternative 3 (City)

City Alternative 3			Total			Voting Age Population			
District	Deviation	Deviation %	Population	White	Black	Total VAP	White VAP	Black VAP	Black %
1	-1256	-5.2%	23,019	7,039	14,566	17,314	5,928	10,397	60.0%
2	446	1.8%	24,721	16,702	4,571	20,214	14,276	3,310	16.4%
3	220	0.9%	24,495	19,835	2,101	19,582	16,162	1,522	7.8%
4	1133	4.7%	25,408	19,311	3,258	19,992	15,610	2,281	11.4%
5	-544	-2.2%	23,731	7,690	14,858	18,926	6,847	11,224	59.3%
Ideal	24275	9.8%	121,374	70,577	39,354	96,028	58,823	28,734	29.9%



# Alternative 3 (City)

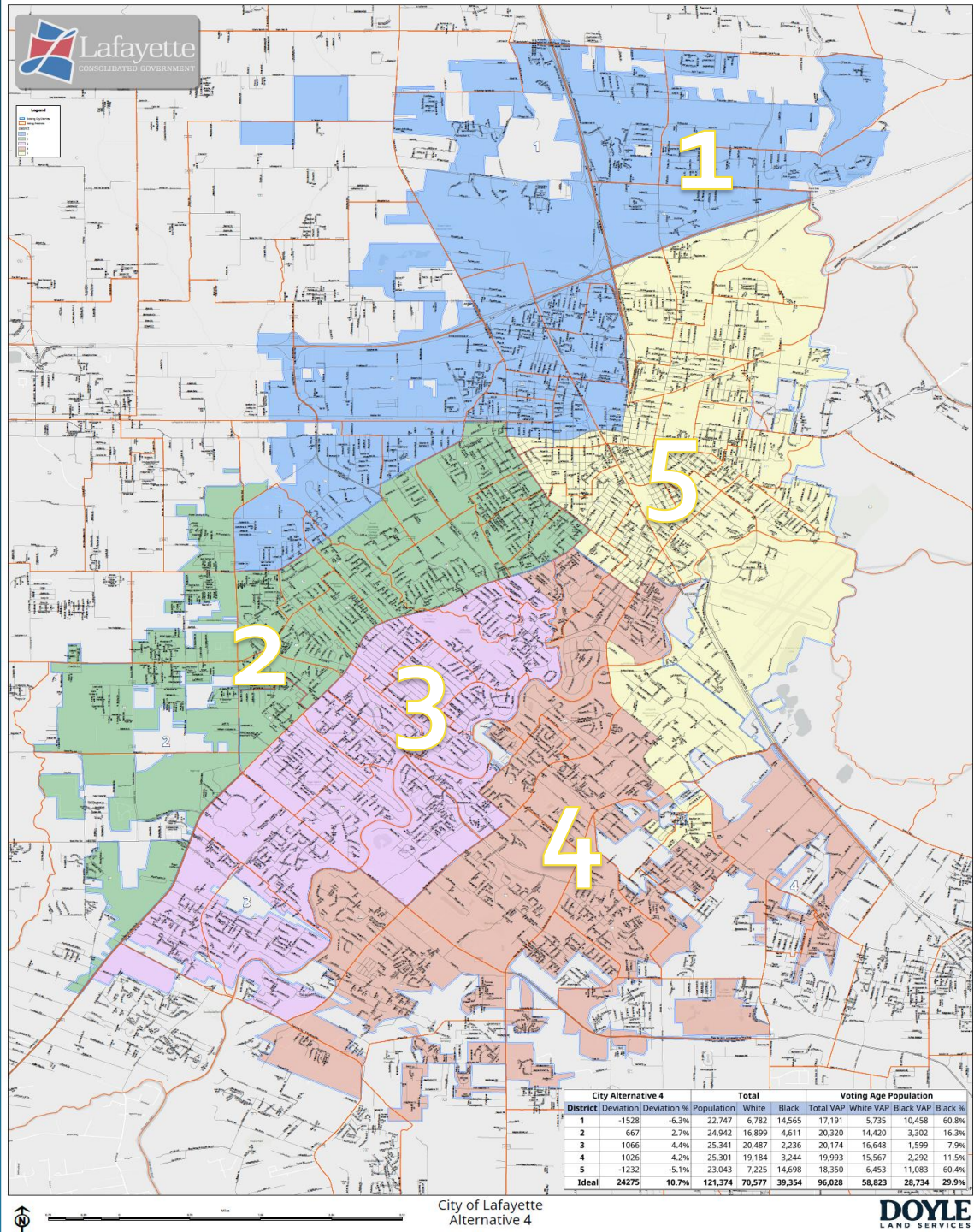




# Alternative 4 (City)

City Alternative 4			Total			Voting Age Population			
District	Deviation	Deviation %	Population	White	Black	Total VAP	White VAP	Black VAP	Black %
1	-1528	-6.3%	22,747	6,782	14,565	17,191	5,735	10,458	60.8%
2	667	2.7%	24,942	16,899	4,611	20,320	14,420	3,302	16.3%
3	1066	4.4%	25,341	20,487	2,236	20,174	16,648	1,599	7.9%
4	1026	4.2%	25,301	19,184	3,244	19,993	15,567	2,292	11.5%
5	-1232	-5.1%	23,043	7,225	14,698	18,350	6,453	11,083	60.4%
Ideal	24275	10.7%	121,374	70,577	39,354	96,028	58,823	28,734	29.9%

# Alternative 4 (City)



# Districts by Precinct



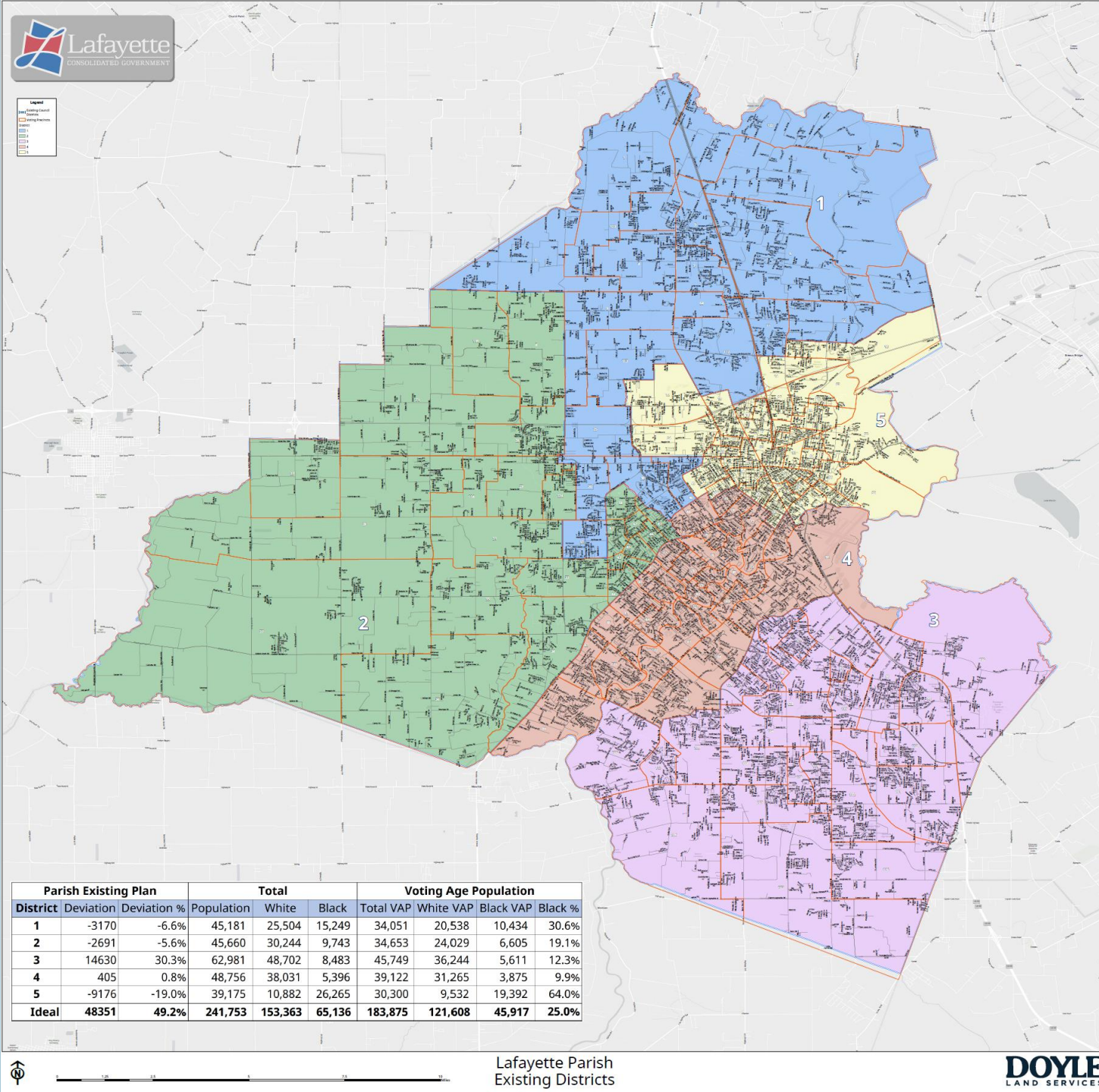
# Questions?





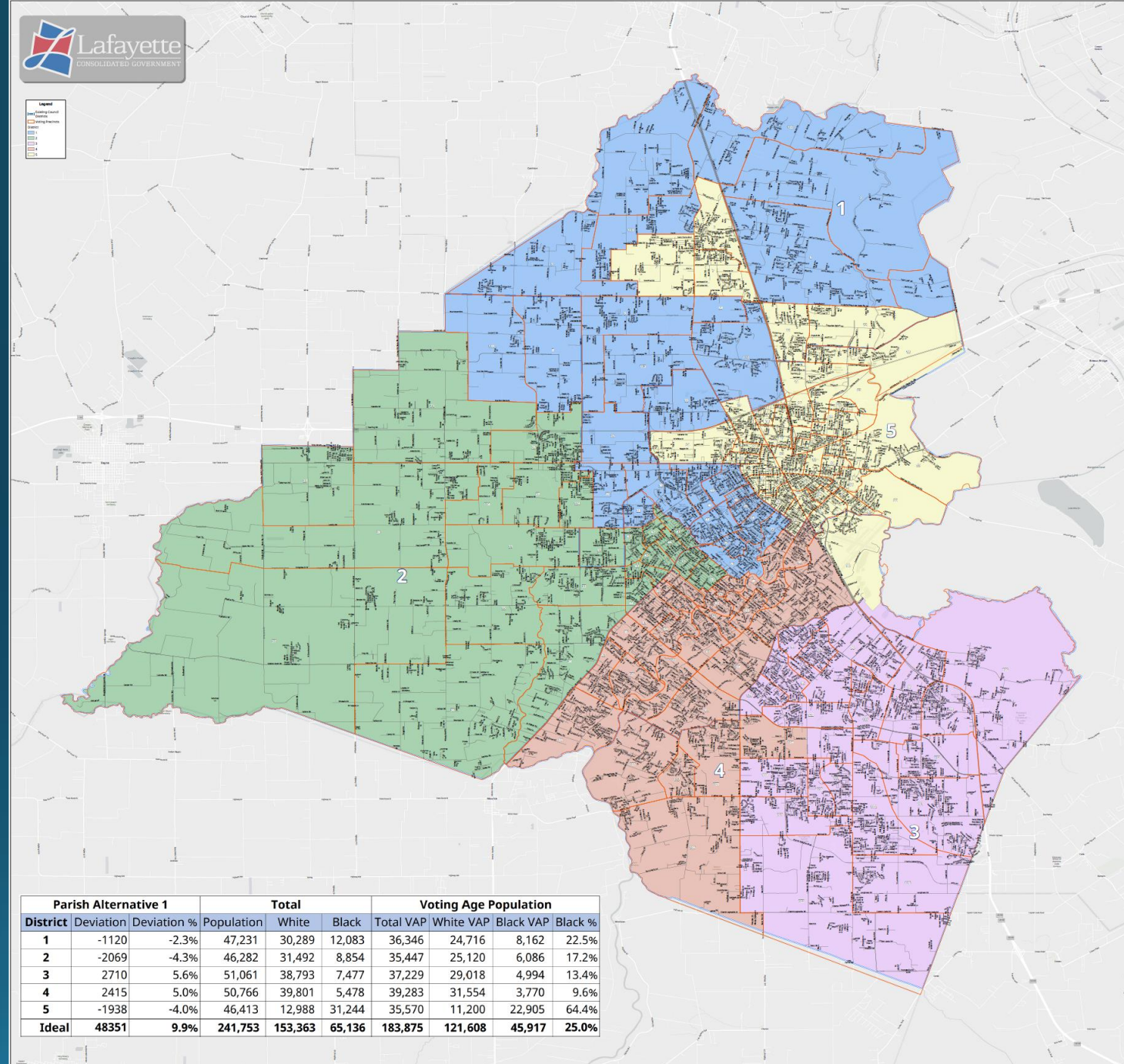


# Existing Districts (Parish)





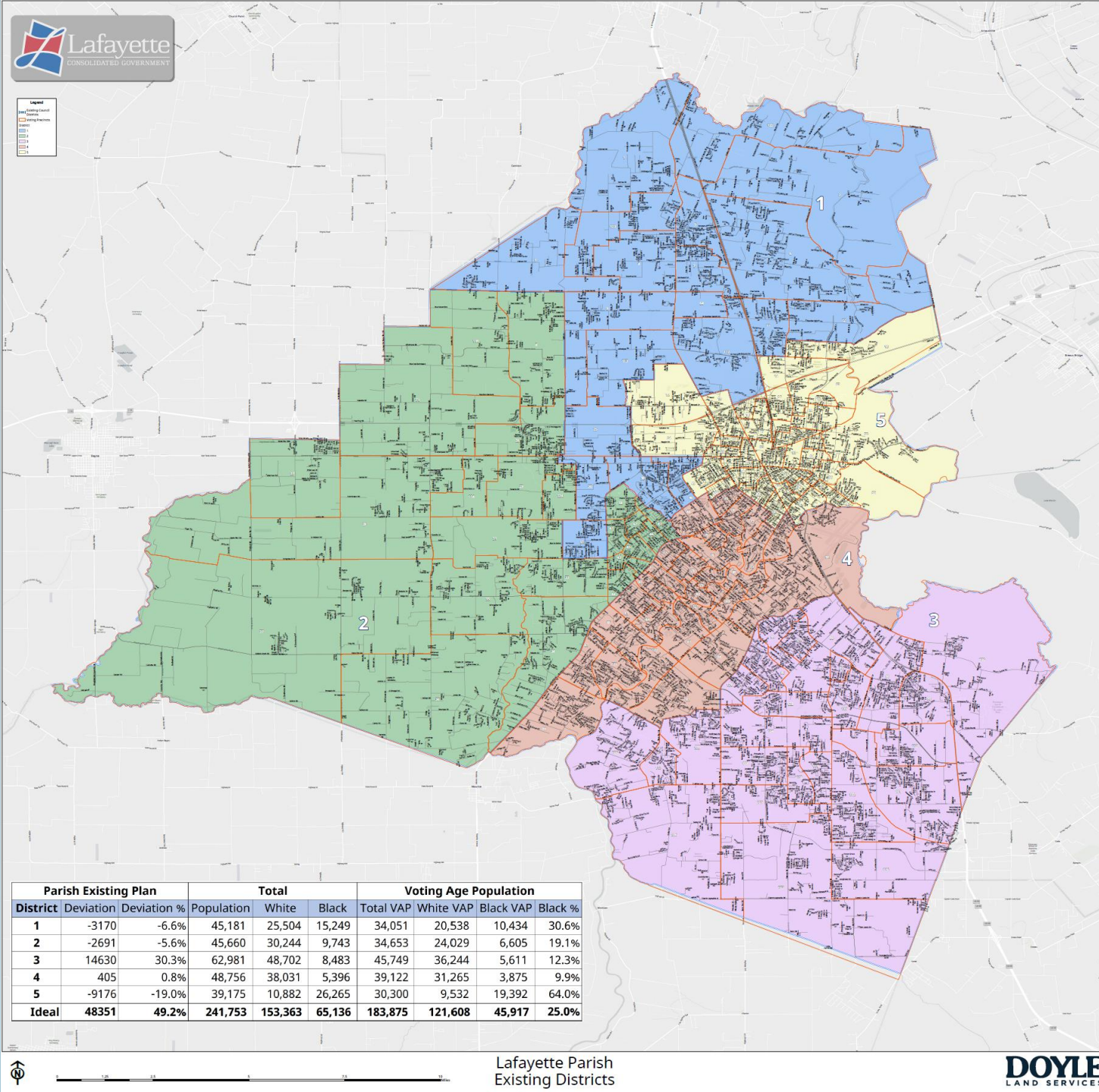
# Alternative 1 (Parish)





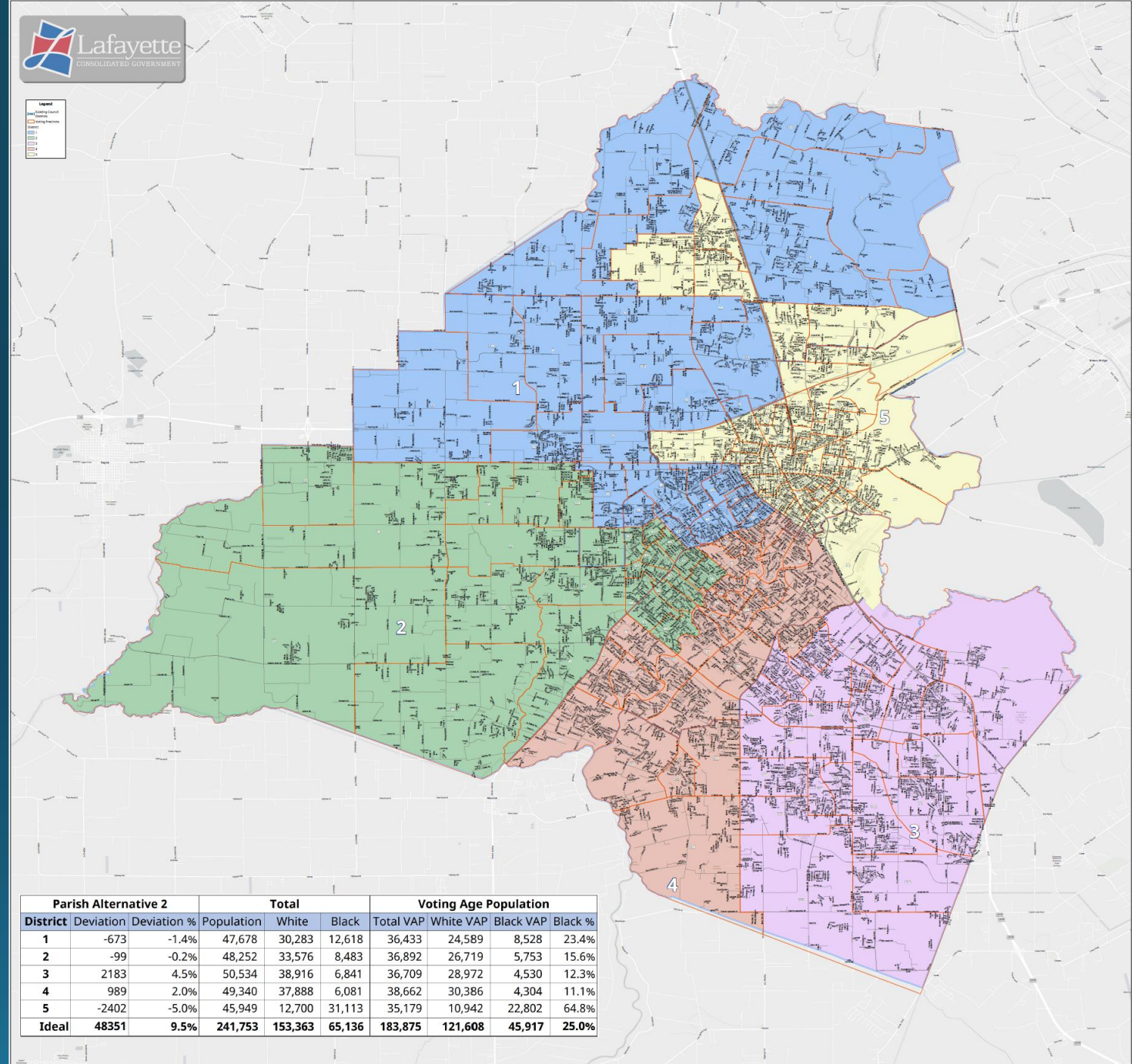


# Existing Districts (Parish)





# Alternative 2 (Parish)



Parish Alternative 2			Total			Voting Age Population			
District	Deviation	Deviation %	Population	White	Black	Total VAP	White VAP	Black VAP	Black %
1	-673	-1.4%	47,678	30,283	12,618	36,433	24,589	8,528	23.4%
2	-99	-0.2%	48,252	33,576	8,483	36,892	26,719	5,753	15.6%
3	2183	4.5%	50,534	38,916	6,841	36,709	28,972	4,530	12.3%
4	989	2.0%	49,340	37,888	6,081	38,662	30,386	4,304	11.1%
5	-2402	-5.0%	45,949	12,700	31,113	35,179	10,942	22,802	64.8%
Ideal	48351	9.5%	241,753	153,363	65,136	183,875	121,608	45,917	25.0%



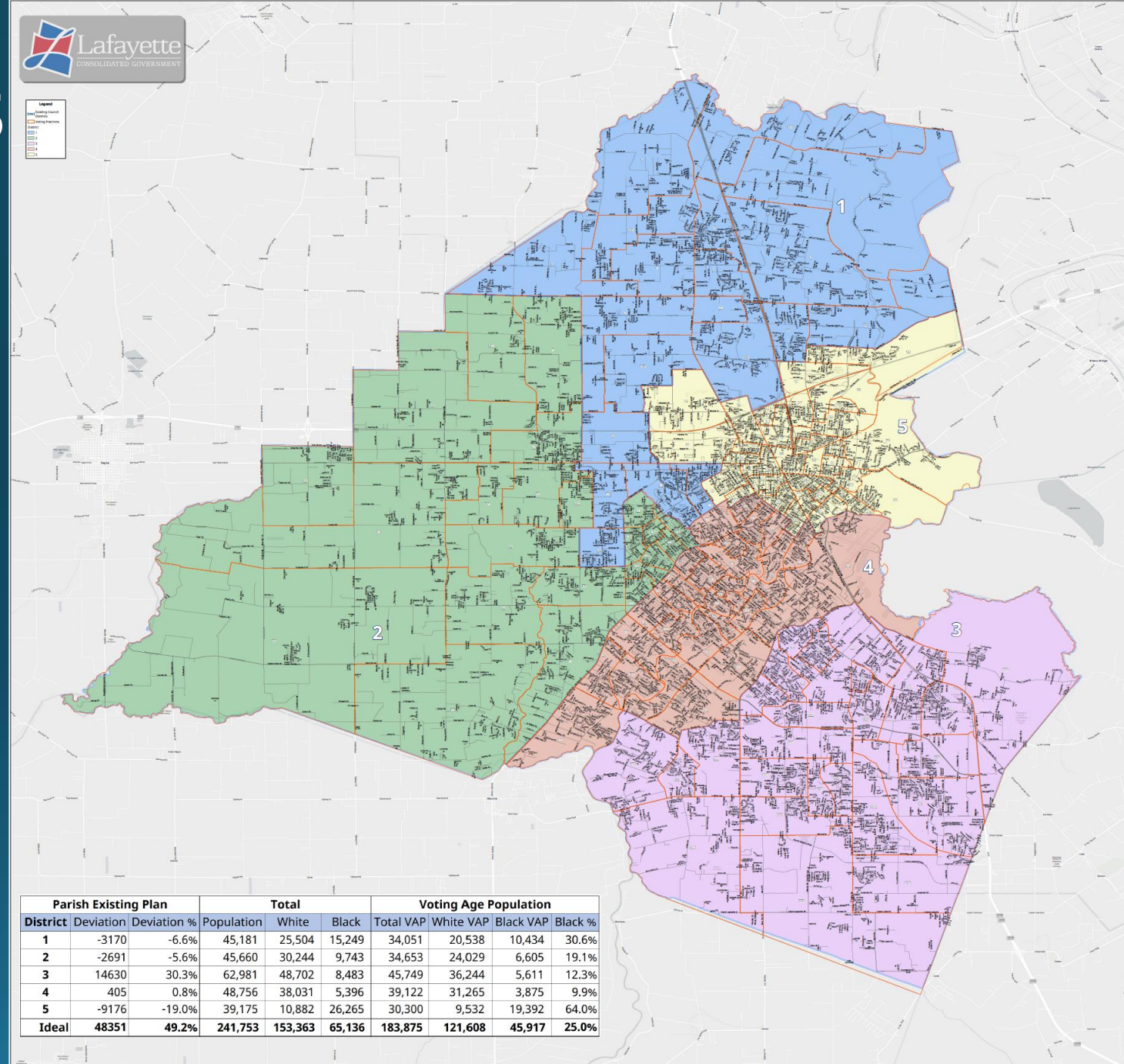
Lafayette Parish  
Alternative Plan 2







# Existing Districts (Parish)



Parish Existing Plan			Total			Voting Age Population			
District	Deviation	Deviation %	Population	White	Black	Total VAP	White VAP	Black VAP	Black %
1	-3170	-6.6%	45,181	25,504	15,249	34,051	20,538	10,434	30.6%
2	-2691	-5.6%	45,660	30,244	9,743	34,653	24,029	6,605	19.1%
3	14630	30.3%	62,981	48,702	8,483	45,749	36,244	5,611	12.3%
4	405	0.8%	48,756	38,031	5,396	39,122	31,265	3,875	9.9%
5	-9176	-19.0%	39,175	10,882	26,265	30,300	9,532	19,392	64.0%
Ideal	48351	49.2%	241,753	153,363	65,136	183,875	121,608	45,917	25.0%

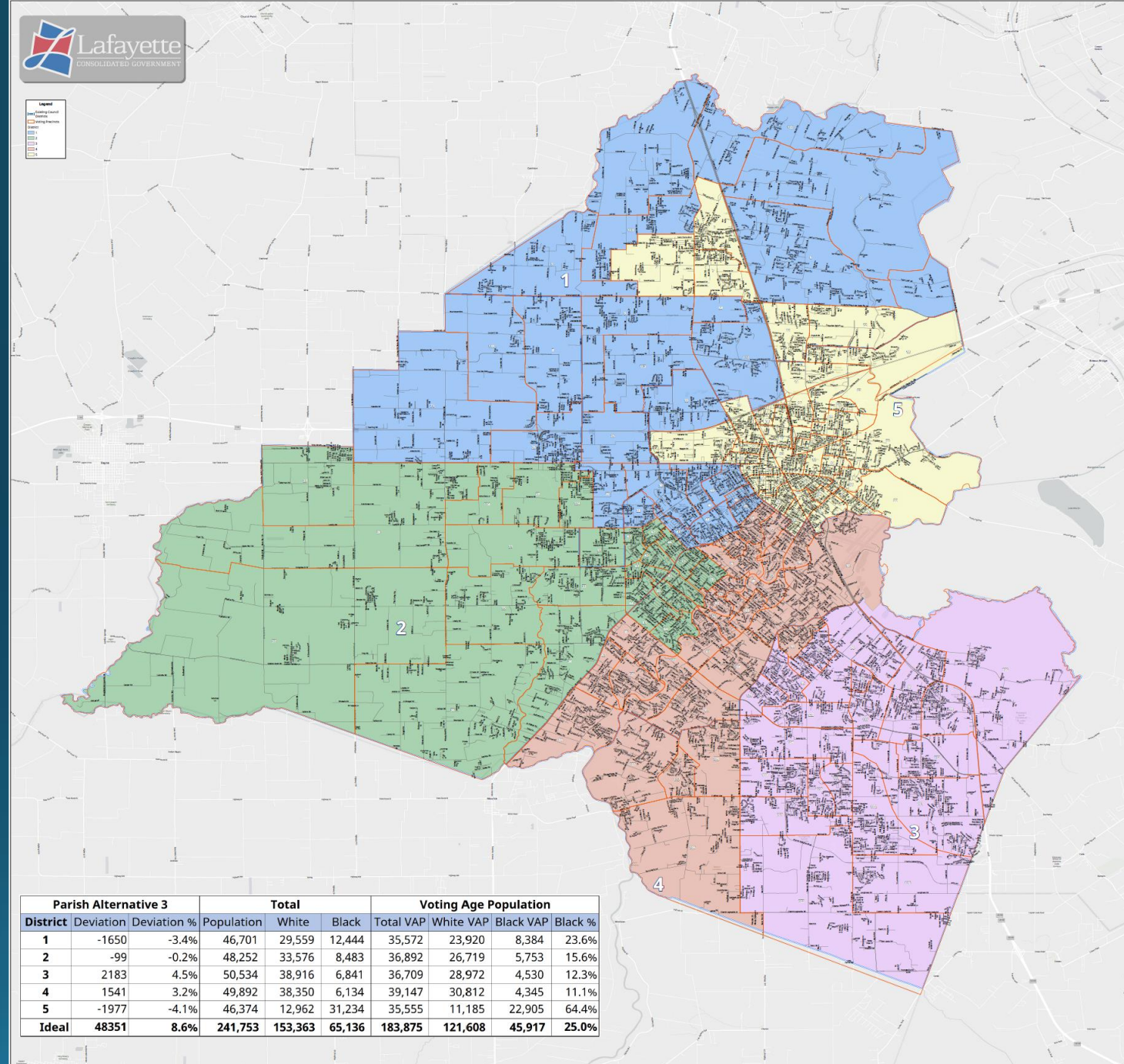


Lafayette Parish  
Existing Districts





# Alternative 3 (Parish)



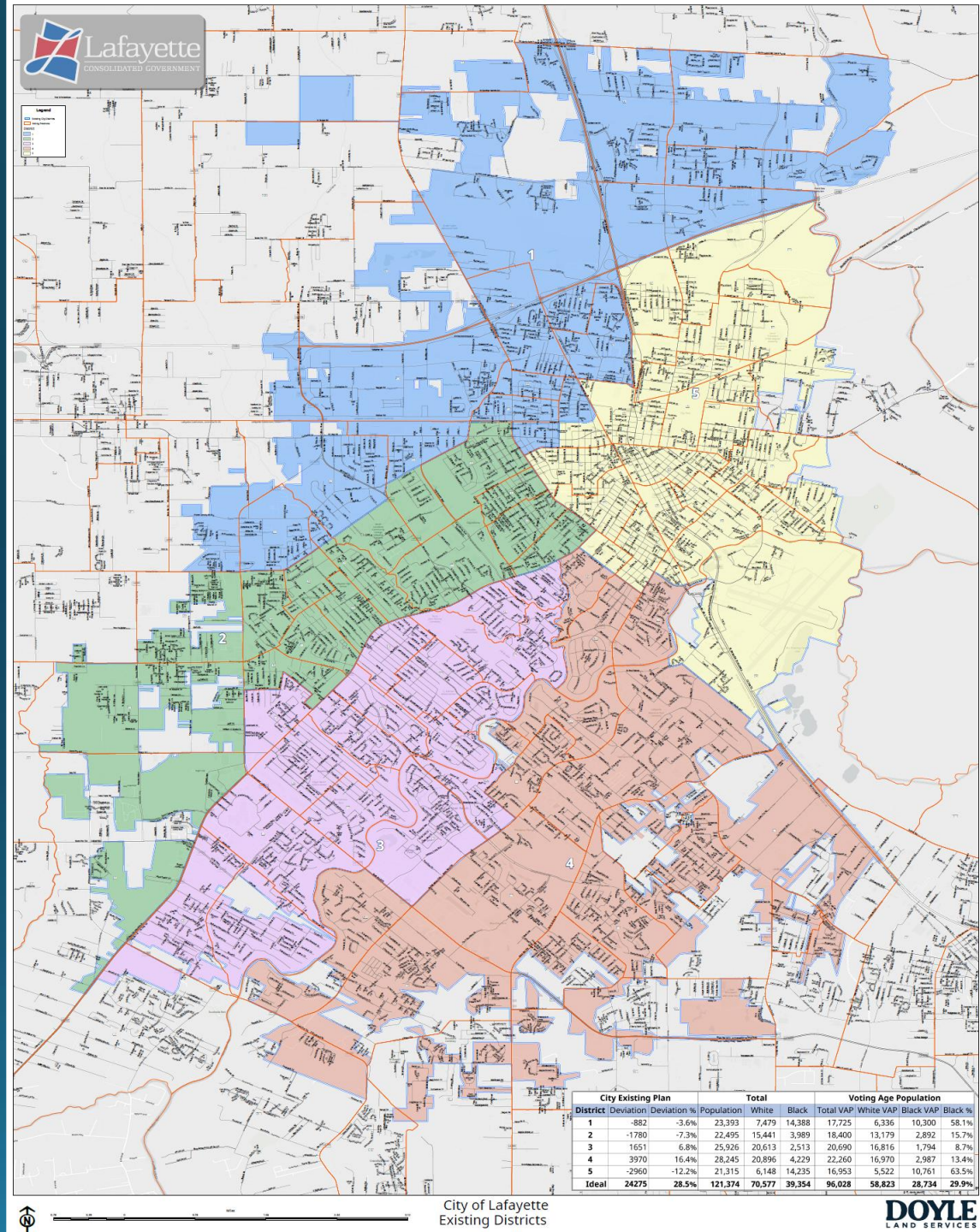
Parish Alternative 3			Total			Voting Age Population			
District	Deviation	Deviation %	Population	White	Black	Total VAP	White VAP	Black VAP	Black %
1	-1650	-3.4%	46,701	29,559	12,444	35,572	23,920	8,384	23.6%
2	-99	-0.2%	48,252	33,576	8,483	36,892	26,719	5,753	15.6%
3	2183	4.5%	50,534	38,916	6,841	36,709	28,972	4,530	12.3%
4	1541	3.2%	49,892	38,350	6,134	39,147	30,812	4,345	11.1%
5	-1977	-4.1%	46,374	12,962	31,234	35,555	11,185	22,905	64.4%
Ideal	48351	8.6%	241,753	153,363	65,136	183,875	121,608	45,917	25.0%





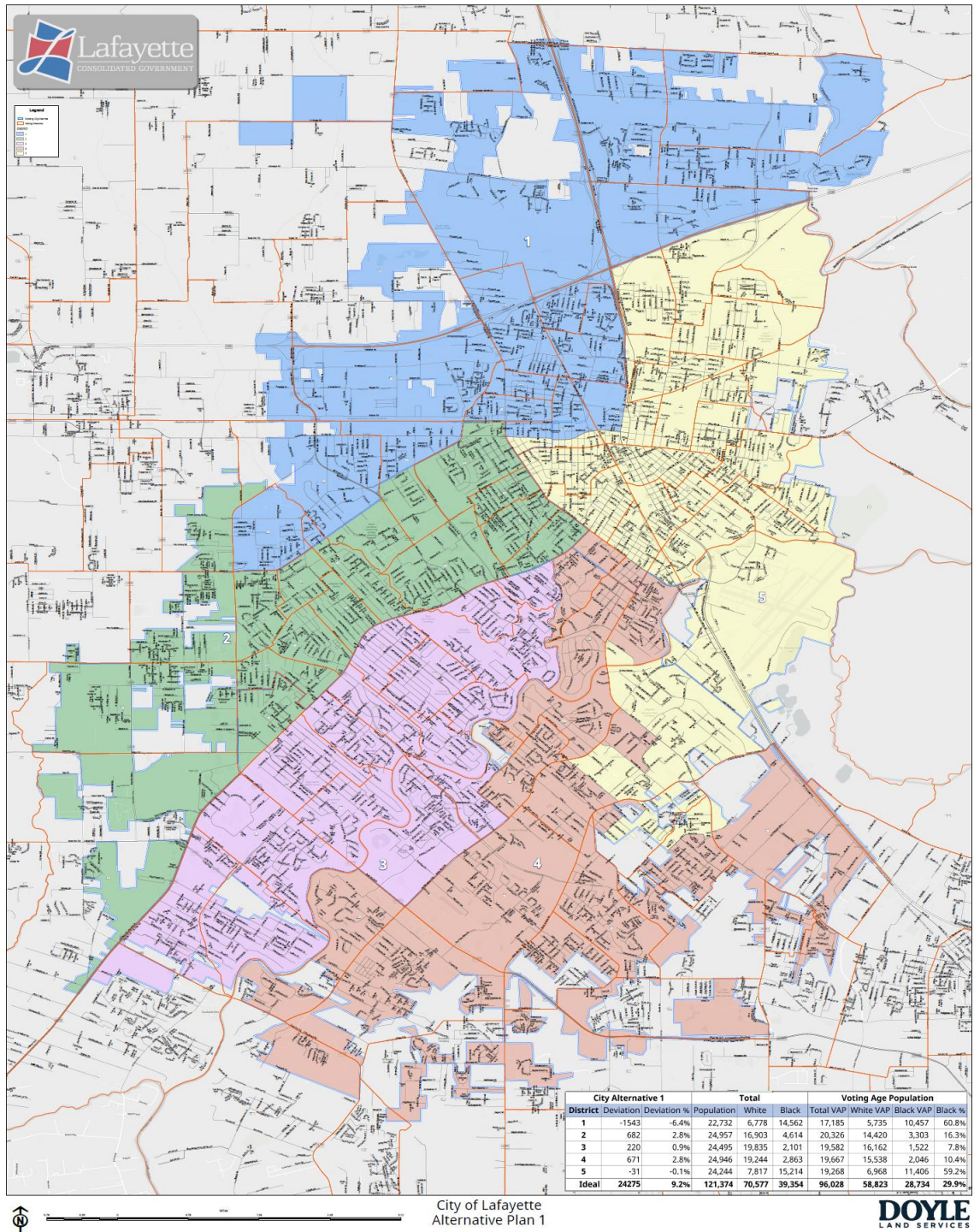


# Current Districts





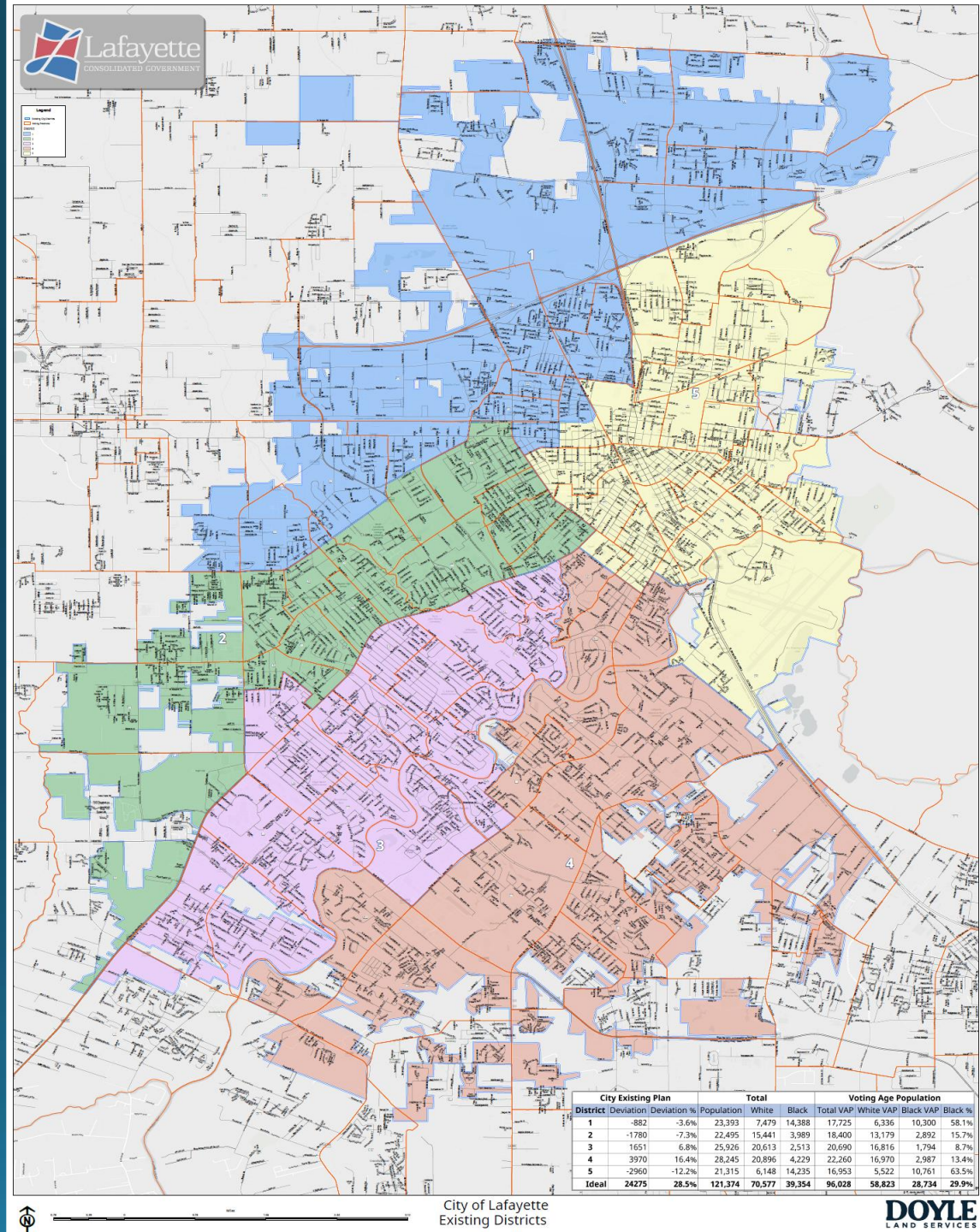
# Alternative 1 (City)





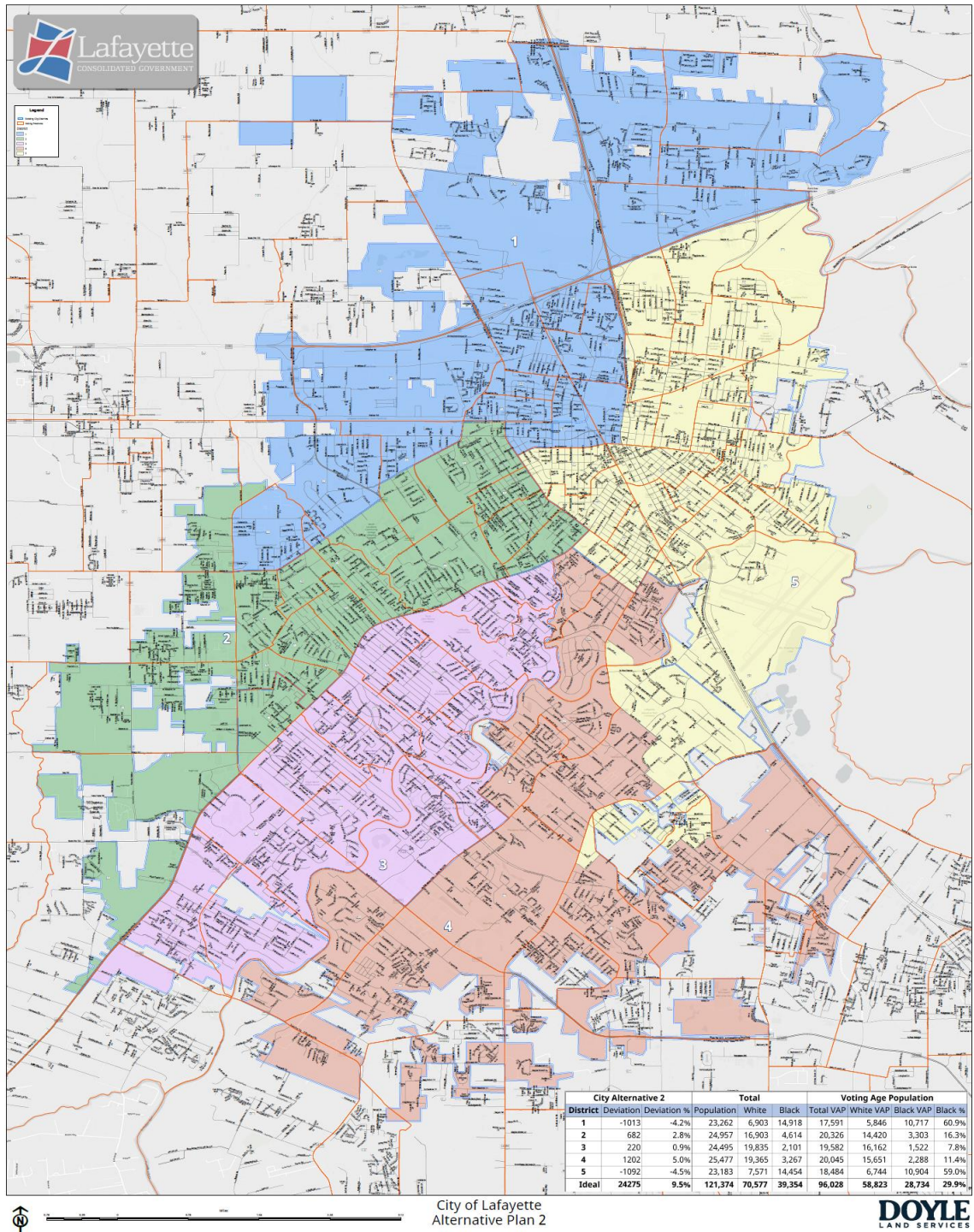


# Current Districts





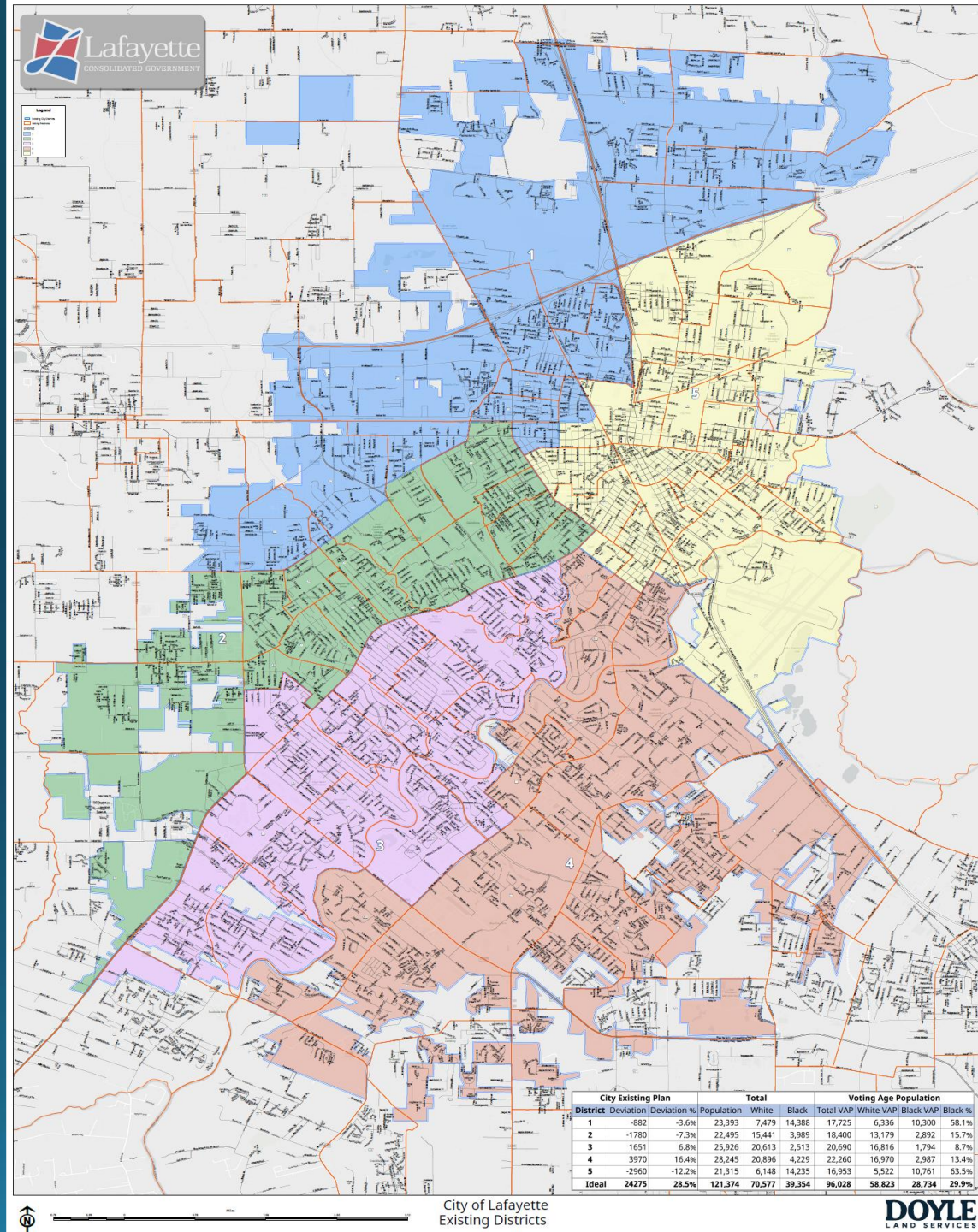
# Alternative 2 (City)





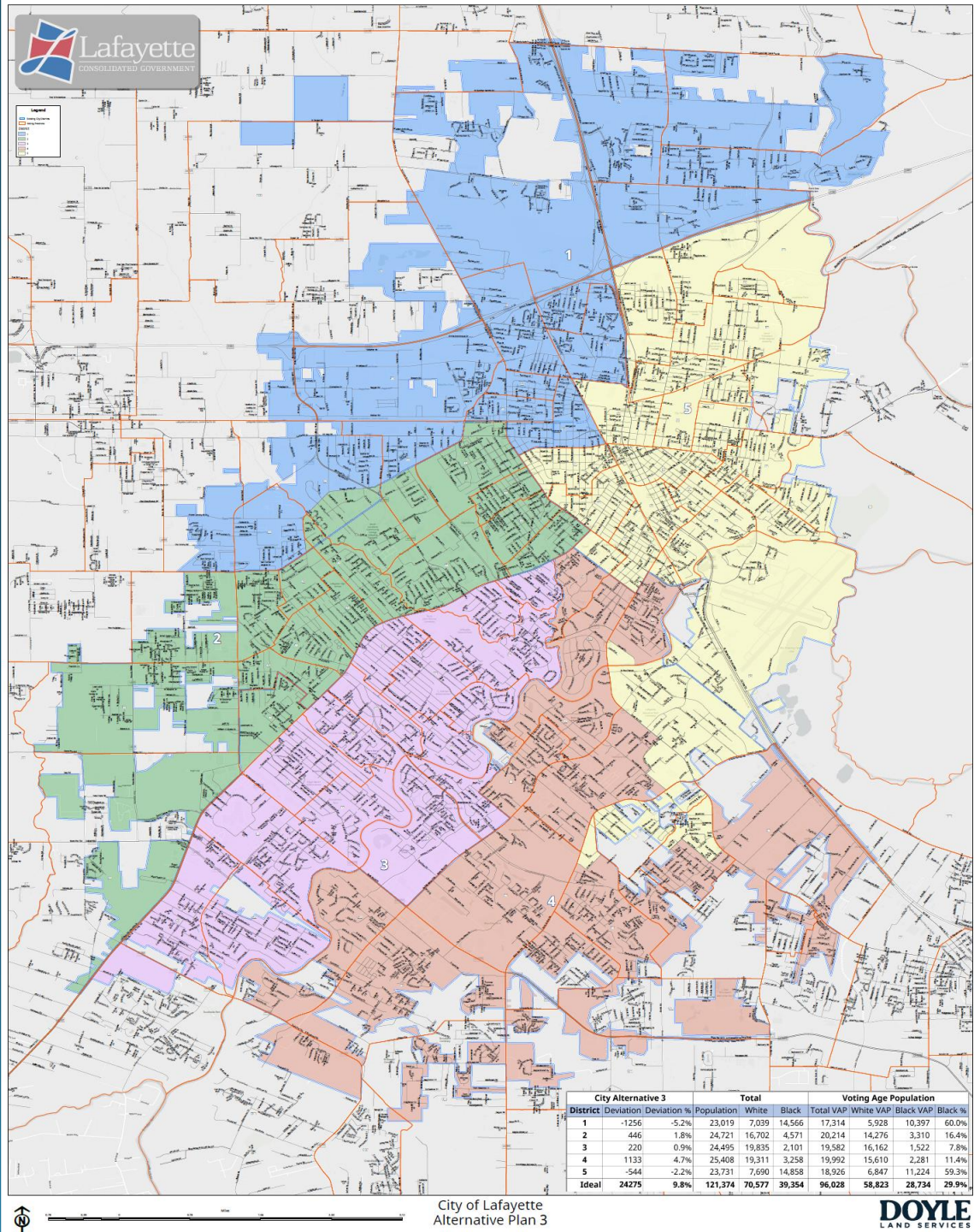


# Current Districts





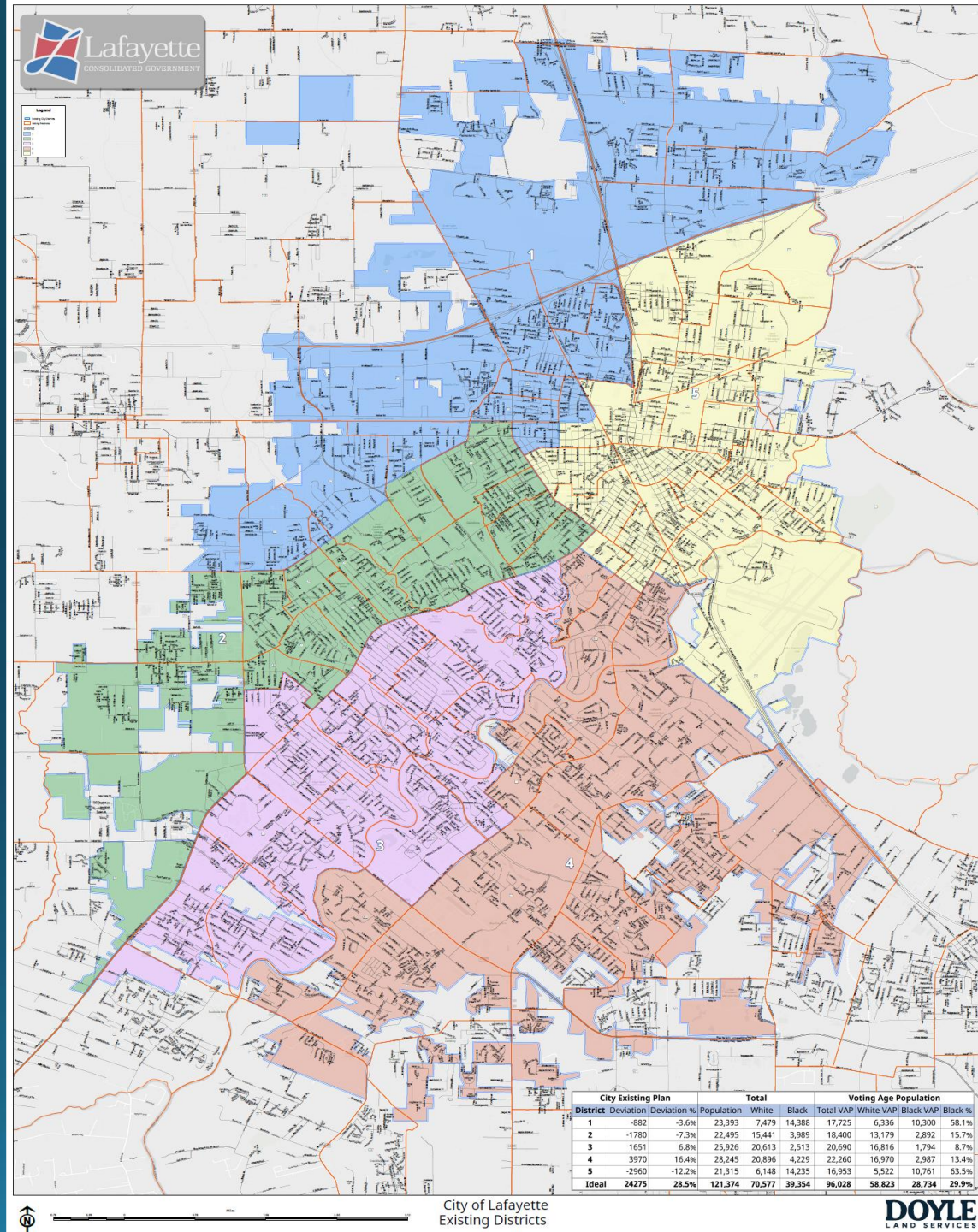
# Alternative 3 (City)







# Current Districts





# Alternative 4 (City)

